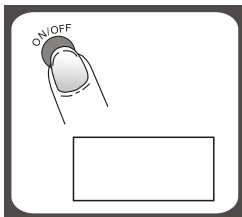


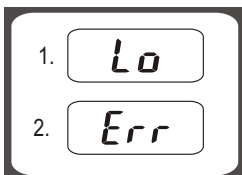
■ AUTO SHUT OFF

Auto shut-off occurs if display shows '0' or shows the same weight reading for 2 minutes.



■ MANUAL SHUT OFF

To maximize battery life, always press ON/OFF to turn off the scale after using.



■ WARNING INDICATORS

1. Replace new battery.
2. Scale overload. Remove item to avoid damage. Max. weight capacity is indicated on the scale.



TARE : Tare Weight
— : Negative Value
○ : Zero Weight
lb : Pounds
oz : Ounces
g : Grams
kg : Kilograms

⚠ CLEANING AND CARE

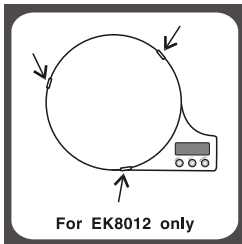
1. Clean the scale with a slightly damp cloth. DO NOT immerse the scale in water or use chemical/abrasive cleaning agents.
2. All plastic parts should be cleaned immediately after contact with fats, spices, vinegar and strongly flavored/colored foods. Avoid contact with acids citrus juices.
3. Always use the scale on a hard, flat surface. DO NOT use on carpet.

CAMRY

ELECTRONIC KITCHEN SCALES

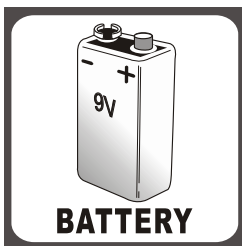
INSTRUCTIONS FOR USE





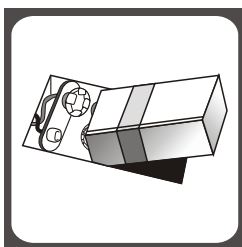
■ BEFORE FIRST USE

Remove protective rubber jams before using the scale. (For EK8012 only)



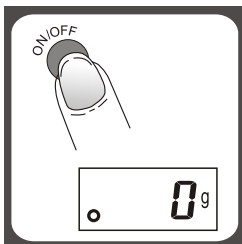
■ BATTERY

1X9V (not included)



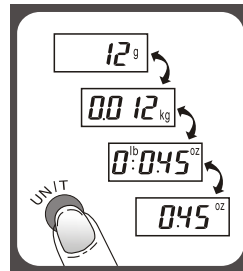
■ TO REPLACE BATTERY

Remove battery compartment cover and attach new battery onto the 9-volt battery snaps. Please observe the polarity.



■ TO OPERATE SCALE

1. Please put the scale on a hard and flat surface.
2. Place bowl (if used) on the scale before turning on the unit.
3. Press and release ON/OFF button to turn on the unit.
4. Wait until display prompts to '0' before starting weighing.



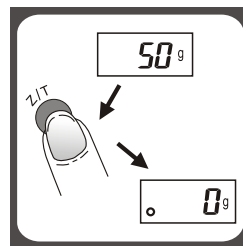
■ TO CONVERT WEIGHT UNITS

If the scale is with both measuring system of Metric (kilograms, grams) and Imperial (pounds, ounces), you can press UNIT to convert between two systems during the course of weighing.

Remark: The unit system of scale depends on sales destination or the requirement of distributor.

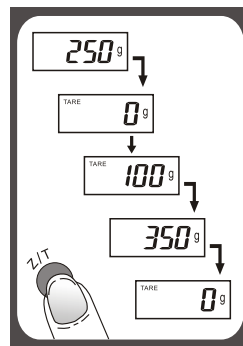
■ "ZERO" or "TARE" function

To weigh different loads consecutively without removing loads from the scale. Put first load on the scale, get weight reading. Press Z/T button to reset the LCD reading to '0' before adding next load. You can repeat this operation.



- **Condition 1: "ZERO" function**
When total sum of all loads on scale $\leq 4\%$ of scale's max capacity.
($4\%=80\text{g}$ when capacity is 2kg;
 200g when capacity is 5kg)

LCD will show '0g' each time Z/T is pressed. Icon '0' will show on left lower corner of LCD, indicating 'ZERO' function is active. Max. weight capacity remains unchanged.



- **Condition 2: "TARE" function**
When total sum of all loads on scale $> 4\%$ of scale's max capacity.
($4\%=80\text{g}$ when capacity is 2kg;
 200g when capacity is 5kg)

LCD will show '0g' each time Z/T is pressed. Icon 'TARE' will show on left upper corner of LCD, indicating 'TARE' function is active. Max. weight capacity is reduced by total weight of all loads.

■ Under this condition:

By pressing Z/T, you can see the total weight of all loads on the scale. If you want to weigh more loads, just press Z/T to re-set LCD reading to '0' again.